

ANGLE HEAD **HALF**

UNIVERSAL **HALF**

NEW

For BT30

- Further reduction in size and weight. ATC possible for all small M/C with BT30 shank.
- Steel body ! It achieves high rigidity even light weight.
- Affordable !
Price : US\$ **1800**



90° type

Steel body !



BT30-HFD7L-120



Free setting for cutter direction

± 120°

BT30-HUD7-102

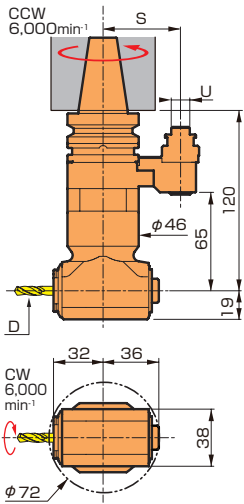
90° type

Free setting for cutter direction

HFD7L

For drilling-endmilling

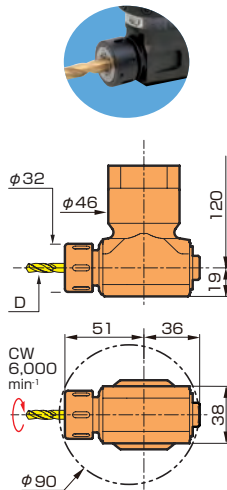
φ1~φ7



HFA10

For drilling-endmilling

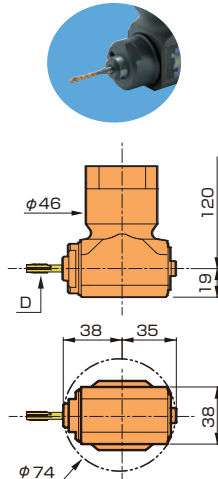
φ2.4~φ10



HFT4L

For tapping

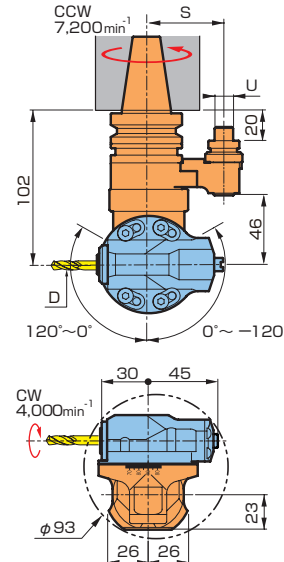
M2~M12



HUD7

For drilling-endmilling

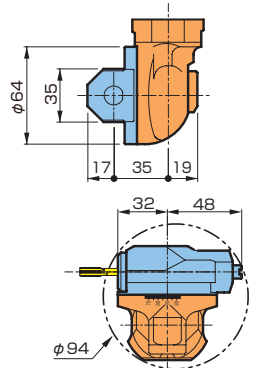
φ1~φ7



HUT4

For tapping

M2~M8



コード (本体)	φ D	Kg	⌀
BT30 - HFD7L - 120	1~7	1.8	D 7
- HFA10 - 120	2.4~10		C10
- HFT4L - 120	M2~M8		TA4

コード (本体)	φ D	Kg	⌀
BT30 - HUD7 - 102	1~7	1.8	D 7
- HUT4 - 102	M2~M8		TA4

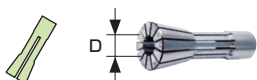
■ Option

•DETa-1 Collet (HFD7L / HUD7) •Spring collet (HFA10) •Tap sleeve (HFT / HUT) •Retention knob

■ Standard Accessories

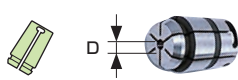
•Single ended Spanner (HFD7L / HFA10) •Spanner (HFA10) •Spanner (HFD7L / HUD7) •Hexagonal wrench set

DETa-1 collet



CODE	φ D
D 7 - 1.5	1 ~ 1.5
- 2	1.5 ~ 2
- 2.5	2 ~ 2.5
- 3	2.5 ~ 3
- 4	3 ~ 4
- 5	4 ~ 5
- 6	5 ~ 6
- 7	6 ~ 7

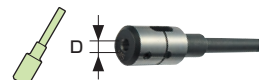
Spring collet



CODE	φ D
C10 - D	2.6 2.8 3 3.2 ...(0.2 steps) ... 9.4 9.6 9.8 10

EX. $\overset{\phi D}{\text{C10-6}}$

Tap sleeve



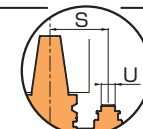
CODE	φ D
TA4 - M 2	M2, M2.6
- M 3	M 3
- M 4	M 4
- M 5	M 5
- M 6	M 6
- M 8	M 8

Positioning pin



CODE	Note	φ U
HP - 45B	For FKA-50	12
HP - E50B	For FKC-65	18

Bracket



CODE	S
FKA - 50	50
FKC - 65	65

• We can provide other size and shank type. Refer to "Tooling System" catalogue for further information.
• Please contact us for positioning block details.

MST corporation

1738 Kitatahara Ikoma Nara 630-0142 Japan
TEL:81-743-78-1931 FAX:81-743-78-3854

<http://www.mst-corp.co.jp>